

# Summit, WI

# Aurora Medical Center- Summit

**GPS ID:** \_\_\_\_\_ **Airspace:** G  
**Radio Preset:** \_\_\_\_\_ **Weather:** KUES -ASOS  
**Heading/Dist:** \_\_\_\_\_ ° / \_\_\_\_\_ nm **Nearest Aprt:** KUES- (D)  
**ETE / Fuel:** \_\_\_\_\_ mins/ \_\_\_\_\_ lbs **VORTAC:** BAE 245° / 9

### Comm/Flight Following/Medical Support

FFL Flight Comm 129.475  
 \*\*\* \*\*

### Pad Information

*Surface / Elev:* Concrete / 900  
*TLOF/FATO:* 74 x 74 / 80 x 80  
*Max Pad Weight:* 20,000 lbs  
*Max Rotor Diam:* 50 ft  
*Security:* Local (see red below)

### Lighting

*PCL:* No  
*Beacon:* No  
*Perimeter:* Blue  
*Flood:* Yes- Rooftop  
*Windsock:* N parking lot

**Preferred App/Dep:** Attempt to avoid arrivals/departures from the N over I-94.

### Obstructions / Cautions / Notes

Hospital high points identified by red caution/obstruction lights



Summit, WI Aurora Med Ct - Summit (No ID) N43 04.0 W88 28.0

IMPORTANT: The pilot retains full responsibility for safe and legal flight operations, regardless of data presented on this page.

# Summit, WI

# Aurora Medical Center- Summit

### Jet-A Fuel Information

*Nearest Fuel:* KUES  
*Phone:* (262) 549-6150

### Nearest Weather Reporting

KUES- 118.875  
 (262) 521-5226

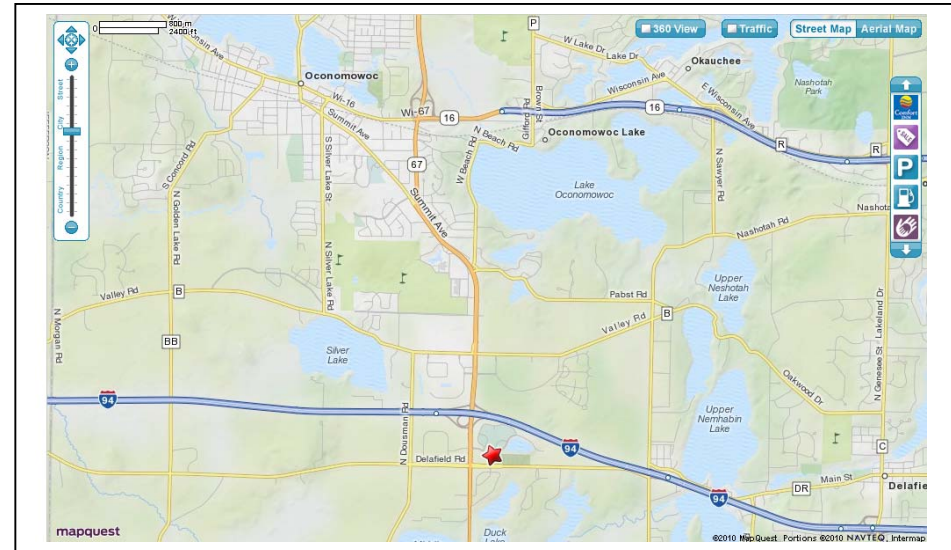
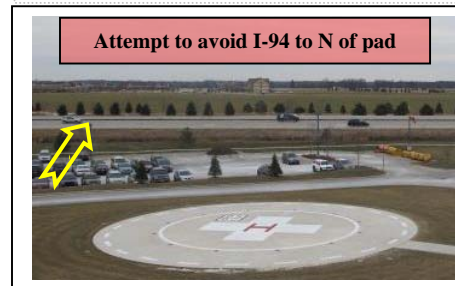
### Hospital Information

*Unit:* Emergency Room  
*Unit Phone:* (262) 567-5658/5328  
*Addr:* 36500 Aurora Drive  
 Summit, WI 53066-4899  
*County:* Waukesha

*Frequency/PL* (WCODE / Tone/ MCODE):  
 T- 155.340 PL 146.2 / 23 / 4B  
 R- 155.340 PL 146.2 / 23 / 4B  
*Encode:* \*\*\*  
*MRI:* YES

### Additional Notes

Contact Security w/ ETA (262-434-1103). ED Fax (262-434-1901)  
 ICU Available



Summit, WI Aurora Med Ctr- Summit (No ID) N43 04.0 W88 28.0

IMPORTANT: The pilot retains full responsibility for safe and legal flight operations, regardless of data presented on this page.